

### Functional characteristics

<b>Width of PCB:</b>	68 mm - 72 mm (2.677 in - 2.835 in)
<b>Support Type:</b>	extruded
<b>Standard Colour:</b>	green
<b>Thickness of PCB:</b>	1.6 ÷ 2.8 mm (.063 ÷ .110 in)
<b>Material:</b>	PA6.6 and PVC (UL94-V0)

Description	Part-Number	Pcs / pack
<b>1 Central Body</b>	<b>STC072S</b> _____	50
	<b>STC0722000</b>	10
	<b>STC072L</b> _____	100
<b>2 Left Lateral Element with Rail Hook</b>	<b>STC072TSX0</b>	50
<b>3 Right Lateral Element with Rail Hook</b>	<b>STC072TDX0</b>	50
<b>4 DIN Rail Hook</b>	<b>STC072P011</b>	50
<b>5 Head Without Rail Hook</b>	<b>STC072T000</b>	100
<b>6 Screw for Head Fastening</b>	<b>STC000V015</b>	100
<b>Screw for Head Fastening</b>	<b>STC000V025</b>	100
<b>7 Bracket for Mounting on the Wall</b>	<b>STC000F000</b>	100
<b>8 Size of STD Adapter for 68 mm (2.677 in) Boards</b>	<b>STC072A026</b>	50

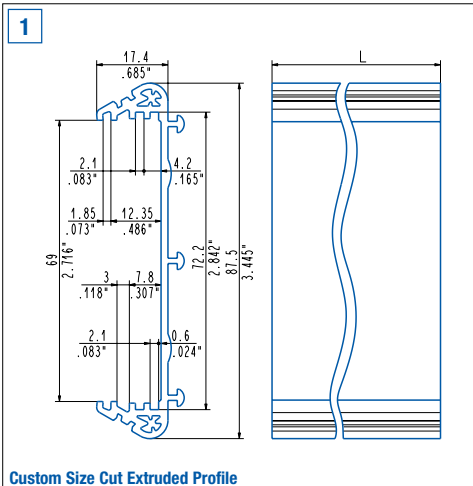
## 1

### Custom Sized Cut Profile

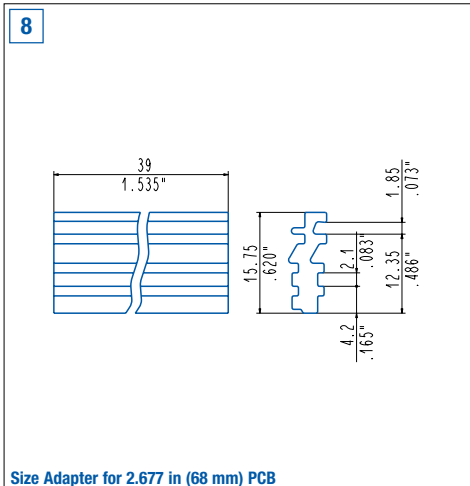
For a Custom Sized Cut Profile, the length of the Central Body must be equal to the length of the PCB minus 3.5 mm (.138 inch). It's advised to round off the figure to the higher whole number. The length of the support, including the Lateral Elements, is equal to the length of the Profile plus 6 mm (.236 inch).

### Example

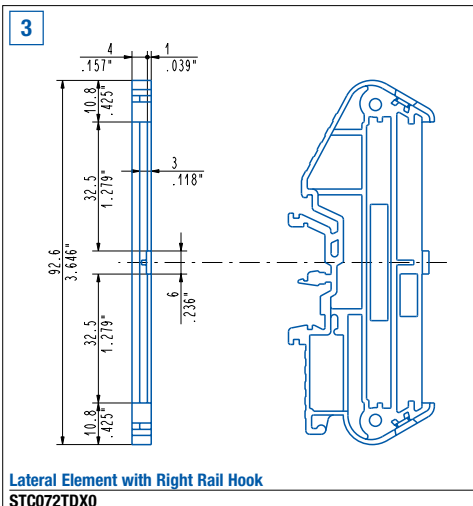
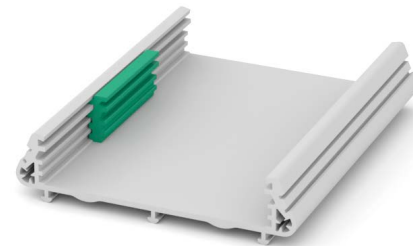
For PCB		Cut Profile sizes L (1)		Length of support con aggancio guida DIN		Part-Number	Pcs / pack
(mm)	(in)	(mm)	(in)	(mm)	(in)		
20,00	.787	16,50	.650	22,50	.886	<b>STC072S016</b>	50
31,25	1.230	27,75	1.093	33,75	1.329	<b>STC072S028</b>	50
42,50	1.673	39,00	1.535	45,00	1.772	<b>STC072S039</b>	50
53,75	2.116	50,25	1.978	56,25	2.215	<b>STC072S050</b>	50
65,00	2.559	61,50	2.421	67,50	2.657	<b>STC072S061</b>	50
76,25	3.002	72,75	2.864	78,75	3.100	<b>STC072S073</b>	50
87,50	3.445	84,00	3.307	90,00	3.543	<b>STC072S084</b>	50
98,75	3.888	95,25	3.750	101,25	3.986	<b>STC072S095</b>	50
110,00	4.331	106,50	4.193	112,50	4.429	<b>STC072S106</b>	50
121,25	4.774	117,75	4.636	123,75	4.872	<b>STC072S118</b>	50
132,50	5.217	129,00	5.079	135,00	5.315	<b>STC072S129</b>	50
143,75	5.659	140,25	5.522	146,25	5.758	<b>STC072S140</b>	50
155,00	6.102	151,50	5.965	157,50	6.201	<b>STC072S151</b>	50
166,25	6.545	162,75	6.407	168,75	6.644	<b>STC072S163</b>	50
177,50	6.988	174,00	6.850	180,00	7.087	<b>STC072S174</b>	50
-----	-----	Profile for PCB with L = 2 m (78.740 in)		-----	-----	<b>STC0722000</b>	10
L (PCB)	L (PCB)	L(5) = L (PCB) -3,5	L = L (PCB) -1,38	L + 6	L +.236	<b>STC072L_ _ _</b>	100



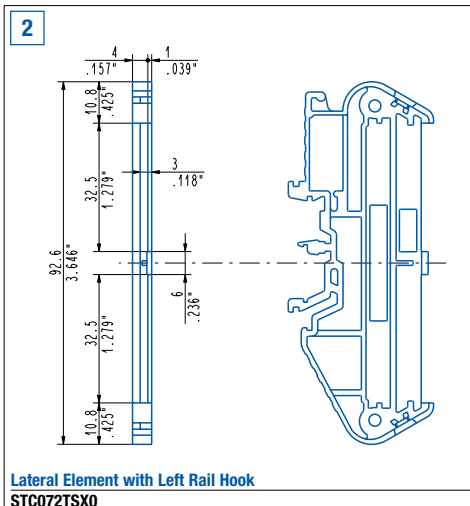
**Custom Size Cut Extruded Profile**  
STC072S\_ \_ , STC0722000 , STC072L\_ \_ \_



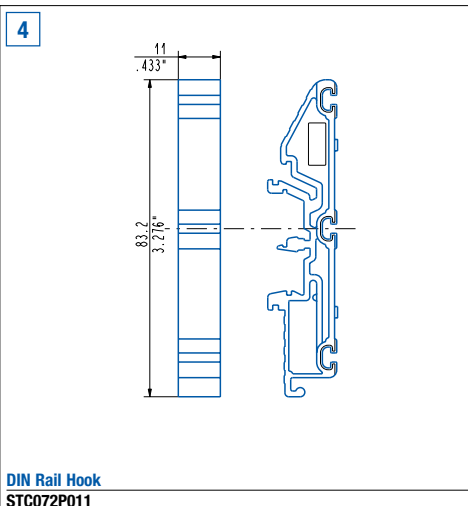
**Size Adapter for 2.677 in (68 mm) PCB**  
STC072A026



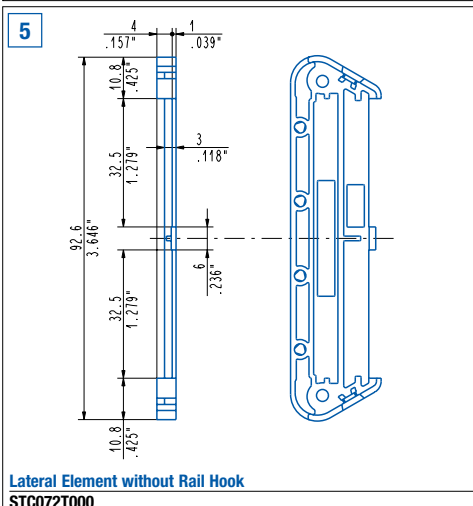
**Lateral Element with Right Rail Hook**  
STC072TDX0



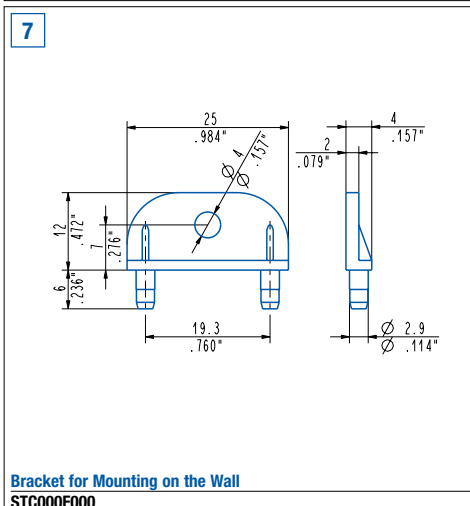
**Lateral Element with Left Rail Hook**  
STC072TSX0



**DIN Rail Hook**  
STC072P011



**Lateral Element without Rail Hook**  
STC072T000



**Bracket for Mounting on the Wall**  
STC000F000