

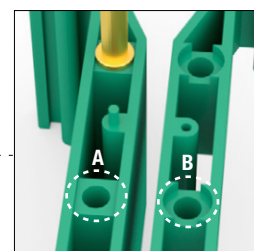
Functional characteristics

Width of PCB:	107.5 mm (4.232 in)
Support Type:	modular
Standard Colour:	green
Thickness of PCB:	1.6 mm (.063 in)
Material:	PA6.6 (UL94-V0)

Description

1	Base Element with Hook
2	Base Element
3	Base Element
4	Lateral Element
5	Stiffening Copper Alloy Element

Part-Number	Pcs / pack
SMC107P035	50
SMC107S035	50
SMC107S016	50
SMC107T000	100
SMC107S00T	100



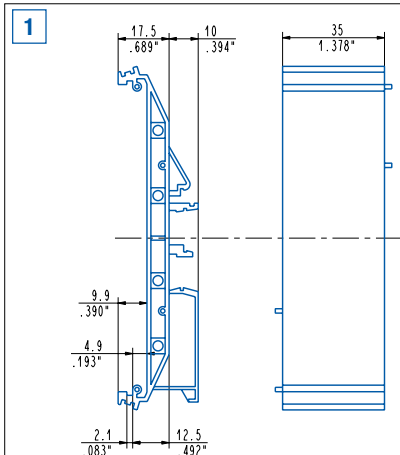
Attention, hook the base elements by fastening side **A** (filled) with side **B** (empty).

Modular Supports for 107.5 mm (4.232 in) Wide Boards

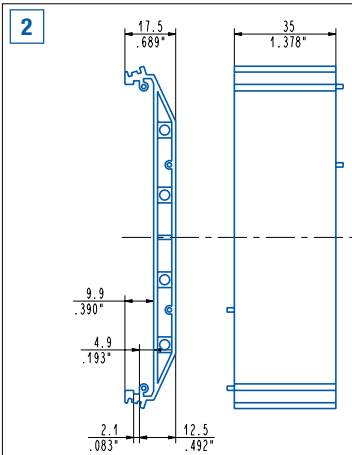
Base Elements and **Lateral Elements** are combined together to obtain PCB Supports according to the table on the next page. At least one of the **Base Elements** must be provided with a **Hook**. 2 to 4 **Stiffening Copper Alloy Elements** must be inserted between any two **Base Elements**. For a correct mounting of the PCB Support, if an **SMC107S016 Base Element** is used, it **must be positioned** between two **SMC107S035** or **SMC107P035 Base Elements**.

The following table shows the configuration of support elements and the corresponding total length of the assembled support and the length of the PCB.

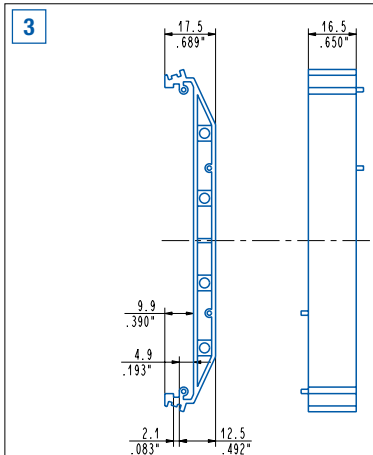
Length of PCB		Length of support		Lateral Element	Base Element	Base Element	Base Element With Hook	Stiffening Copper Alloy Element
(mm)	(in)	(mm)	(in)	SMC107T000	SMC107S016	SMC107S035	SMC107P035	SMC107S00T
38.50	1.516	40.00	1.575	2			1	
55.00	2.165	56.50	2.224	2	1		1	
73.50	2.894	75.00	2.953	2			2	2 ÷ 4
90.00	3.543	91.50	3.602	2	1		2	4
108.50	4.272	110.00	4.331	2		1	2	4 ÷ 8
125.00	4.921	126.50	4.980	2	1	1	2	6 ÷ 8
143.50	5.650	145.00	5.709	2		2	2	6 ÷ 12
160.00	6.299	161.50	6.358	2	1	2	2	8 ÷ 12
178,50 mm	7.028 in	180,00 mm	7.087 in	2		3	2	8 ÷ 16



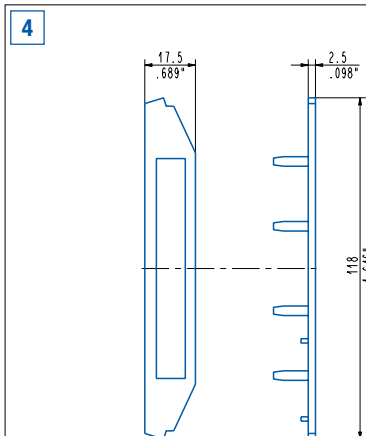
Base Element with Hook
SMC107P035



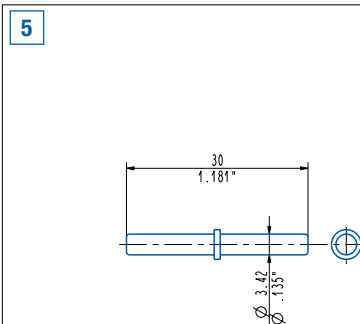
Base Element
SMC107S035



Base Element
SMC107S016



Lateral Element
SMC107T000



Stiffening Copper Alloy Element
SMC107S00T