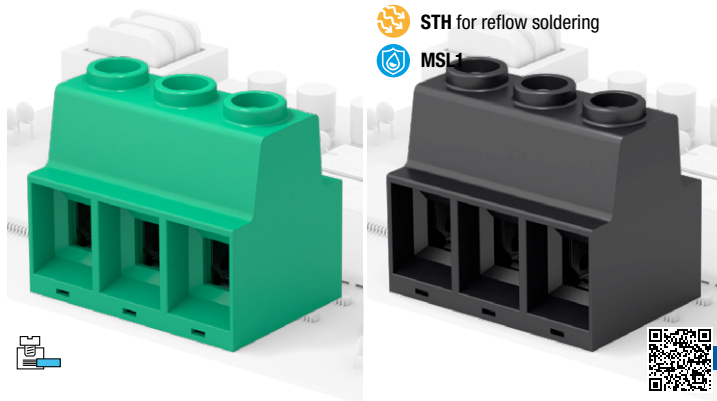


Last release



General data

Dimensional class:	high
Standard colour:	green
Pitches:	metric 15 mm (.591 in)
Screw dimension:	M5
Recommended/highest tightening torque:	2.1/2.5 Nm (18.59/22.13 lbf-in)
PCB thickness:	max. 2.4 mm (.094 in)
PCB hole diameter:	min. 1.6 mm (.063 in)
Stripping length:	18 mm (.71 in)
Operating temperature range	-40 °C ÷ +105 °C (-40 °F ÷ +221 °F)
Contact resistance:	<15 mΩ
Insulating material group:	I (CTI ≥ 600V)
Self-extinguishing class UL94:	V0
Insulation resistance:	>10 ⁹ Ω (500V DC)

Certifications

UL (n. E167473) 135 A

600 V - 135 A factory wiring (130 A field wiring) - 20÷1 AWG

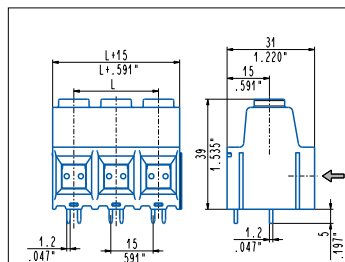
Data according to

IEC EN 60947-7-4

1000 V - 125 A - 35 mm²

Application values for end-use equipment have to be in accordance to norms and applicable to it. The certifications of some product's versions could be pending, for more detailed and updated data please refer to our web site www.sauro.net or your representative Sales Manager.

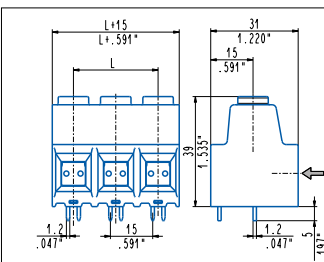
A higher number of poles is obtained by combining together **modular** parts.



0°, modular

MPP_DQ0 2÷8 poles, 15 mm .591" pitch

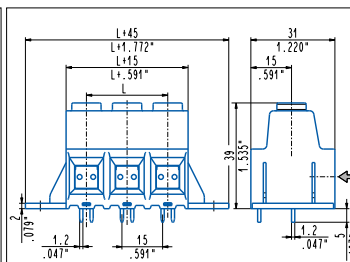
MPPH_DQ0-ON 2÷8 poles, 15 mm .591" pitch



0°, side stackable

MPPH_DQ0 2÷8 poles, 15 mm .591" pitch

MPPH_DQ0-ON 2÷8 poles, 15 mm .591" pitch



0°, mounting flanges

MPPH_DVQ 1÷8 poles, 15 mm .591" pitch

MPPH_DVQ-ON 1÷8 poles, 15 mm .591" pitch

