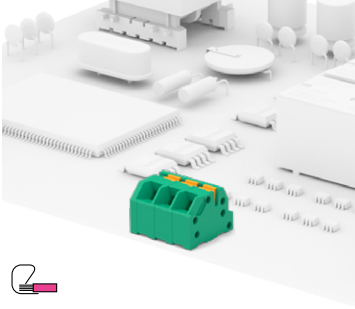


Traditional for wave soldering

Height = 8 mm / 0.315"



STH for reflow soldering

MSL1

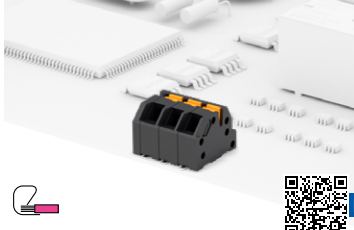
Height = 8 mm / 0.315"



SMD for reflow soldering

MSL1

Height = 8 mm / 0.315"



Last release

General data

Dimensional class:	low
Standard colour:	green for wave soldering, black for reflow soldering
Pitches:	metric 3.5, 5, 7, 10 mm (.138, .197, .276, .394 in)
PCB thickness:	max. 1.6 mm (.063 in)
PCB hole diameter for pin:	min. 1.1 mm (.043 in)
PCB hole diameter for peg:	1.5 mm (.059 in)
Stripping length:	8 mm (.315 in)
Operating temperature range	-40 °C ÷ +105 °C (-40 °F ÷ +221 °F)
Contact resistance:	<15 mΩ
Insulating material group:	I (CTI ≥ 600V)
Self-extinguishing class UL94:	V0
Insulation resistance:	>10 ⁹ Ω (500V DC)

Certifications

UL (n. E167473)

300 V - 8 A - 30÷16 AWG for 3.5 mm, 5 mm pitch

300 V - 8 A - 30÷16 AWG for 7 mm, 10 mm pitch

Data according to

IEC EN 60947-7-4

150 V - 17.5 A - 1.5 mm² solid (13.5 A - 1 mm² stranded) for 3.5 mm

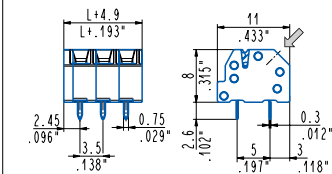
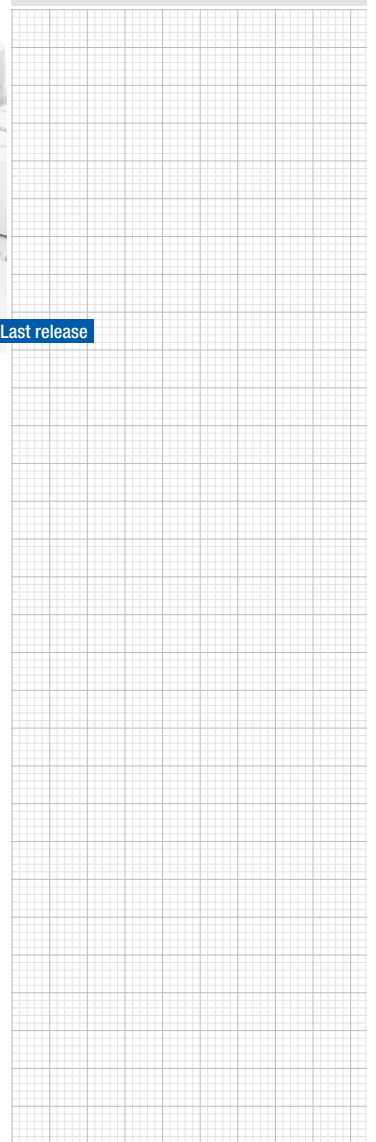
300 V - 17.5 A - 1.5 mm² solid (13.5 A - 1 mm² stranded) for 5 mm pitch

630 V - 17.5 A - 1.5 mm² solid (13.5 A - 1 mm² stranded) for 7 mm pitch

1000 V - 17.5 A - 1.5 mm² solid (13.5 A - 1 mm² stranded) for 10 mm pitch

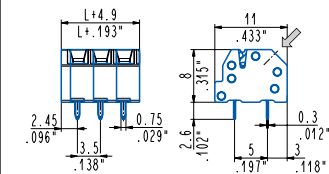
Application values for end-use equipment have to be in accordance to norms and applicable to it.
The certifications of some product's versions could be pending, for more detailed and updated data please refer to our web site www.sauro.net or your representative Sales Manager.

Your drawings and notes



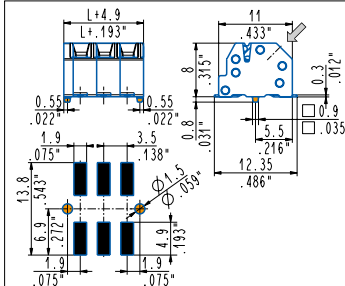
45°

MCB_408 - 2÷12 poles, 3.5 mm \ .138" pitch
MCB_401 - 2÷12 poles, 5 mm \ .197" pitch
MCB_409 - 2÷6 poles, 7 mm \ .276" pitch
MCB_402 - 2÷6 poles, 10 mm \ .394" pitch



45°

MCBH_408-ON - 2÷12 poles, 3.5 mm \ .138" pitch
MCBH_401-ON - 2÷12 poles, 5 mm \ .197" pitch
MCBH_409-ON - 2÷6 poles, 7 mm \ .276" pitch
MCBH_402-ON - 2÷6 poles, 10 mm \ .394" pitch



45°, pegs SMD TECHNOLOGY

MCBD_408-ON00P 2÷12 poles 3.5 mm \ .138" pitch
MCBD_401-ON00P 2÷12 poles 5 mm \ .197" pitch
MCBD_409-ON00P 2÷6 poles 7 mm \ .276" pitch
MCBD_402-ON00P 2÷6 poles 10 mm \ .394" pitch

*Fixing and positioning pegs

