

Last release

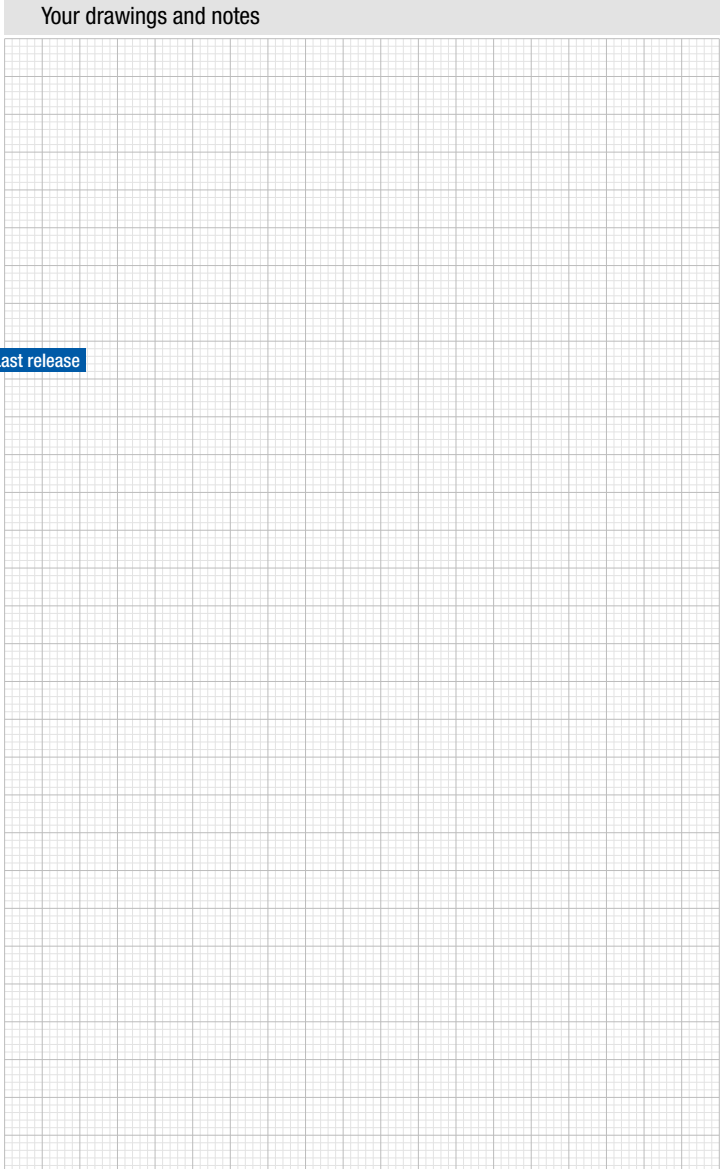
### General data

<b>Dimensional class:</b>	low
<b>Standard colour:</b>	green
<b>Pitches:</b>	metric 3.5, 5, 7, 10 mm (.138, .197, .275, .394 in) imperial 3.81, 5.08, 7.62, 10.16 mm (.150, .200, .300, .400 in)
<b>Screw dimension:</b>	M2
<b>Recommended/highest tightening torque:</b>	0.2/0.25 Nm (1.77/2.21 lbf-in)
<b>Stripping length:</b>	5 ÷ 6 mm (.20 ÷ .24 in)
<b>Operating temperature range:</b>	-40 °C ÷ +105 °C (-40 °F ÷ +221 °F)
<b>Contact resistance:</b>	<15 mΩ
<b>Insulating material group:</b>	I (CTI ≥ 600V)
<b>Self-extinguishing class UL94:</b>	V0
<b>Insulation resistance:</b>	>10 <sup>9</sup> Ω (500V DC)

### Certifications

- UL (n. E167473)**  
300 V - 11 A - 30÷14 AWG - for 3.5 mm, 3.81 mm, 5 mm, 5.08 mm, 7 mm, 7.62 mm pitch  
600 V - 11 A - 30÷14 AWG - for 10 mm, 10.16 mm pitch
- VDE (n. 40013398)**  
130 V - 11A - 1 mm<sup>2</sup> - for 3.5 mm and 3.81 mm pitch  
250 V - 11A - 1 mm<sup>2</sup> - for 5 mm and 5.08 mm pitch  
450 V - 11A - 1 mm<sup>2</sup> - for 7 mm and 7.62 mm pitch
- IMQ (n. CA02.00901)**  
150 V - 11 A - 1.5 mm<sup>2</sup> - 2.5kV - III/3 / 300 V - 11 A - 1.5 mm<sup>2</sup> - 2.5kV - II/2 for 3.5, 3.81 mm pitch  
300 V - 11 A - 1.5 mm<sup>2</sup> - 4kV - III/3 / 600 V - 11 A - 1.5 mm<sup>2</sup> - 4kV - II/2 for 5, 5.08 mm pitch  
400 V - 11 A - 1.5 mm<sup>2</sup> - 6kV - III/3 / 1000 V - 11 A - 1.5 mm<sup>2</sup> - 6kV - II/2 for 7, 7.62 mm pitch  
630 V - 11 A - 1.5 mm<sup>2</sup> - 8kV - III/3 / 1000 V - 11 A - 1.5 mm<sup>2</sup> - 8kV - II/2 for 10, 10.16 mm pitch
- CSA (n. LR102896)**  
300 V - 11 A - 30÷16 AWG - for 3.5 mm, 3.81 mm, 7 mm and 7.62 mm pitch
- Application values for end-use equipment have to be in accordance to norms and applicable to it.  
The certifications of some product's versions could be pending, for more detailed and updated data please refer to our web site [www.sauro.net](http://www.sauro.net) or your representative Sales Manager.

Please see "CONNECTORS COMBINATIONS"

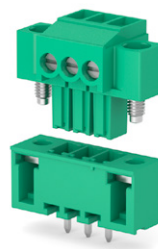


**Side stackable**

- CTF\_008 - 2 ÷ 25 poles, 3.5 mm / .138" pitch
- CTF\_001 - 2 ÷ 18 poles, 5 mm / .197" pitch
- CTF\_009 - 2 ÷ 13 poles, 7 mm / .276" pitch
- CTF\_002 - 2 ÷ 9 poles, 10 mm / .394" pitch
- CTF\_00T - 2 ÷ 25 poles, 3.81 mm / .150" pitch
- CTF\_005 - 2 ÷ 3 poles, 5.08 mm / .200" pitch
- CTF\_007 - 2 ÷ 13 poles, 7.62 mm / .300" pitch
- CTF\_006 - 2 poles, 10.16 mm / .400" pitch

**Locking screw flanges**

- CTF\_0V8 - 2 ÷ 23 poles, 3.5 mm / .138" pitch
- CTF\_0V1 - 2 ÷ 18 poles, 5 mm / .197" pitch
- CTF\_0V9 - 2 ÷ 12 poles, 7 mm / .276" pitch
- CTF\_0V2 - 2 ÷ 9 poles, 10 mm / .394" pitch
- CTF\_0VT - 2 ÷ 23 poles, 3.81 mm / .150" pitch
- CTF\_0V7 - 2 ÷ 12 poles, 7.62 mm / .300" pitch



### Usable with:

- |                       |                        |                               |                           |
|-----------------------|------------------------|-------------------------------|---------------------------|
| <b>CTM</b><br>Page 62 | <b>CTMH</b><br>Page 60 | <b>CTM/CTMH D.</b><br>Page 62 | <b>CKF-SC1</b><br>Page 80 |
|-----------------------|------------------------|-------------------------------|---------------------------|

