

Last release

General data

Dimensional class:	low
Standard colour:	green
Pitches:	metric 3.5 mm, 7 mm (.138 in, .276 in)
Screw dimension:	M2
Recommended/Highest tightening torque:	0.2/0.25 Nm (1.77/2.27 lbf-in)
Stripping length:	5 ÷ 6 mm (.197 ÷ .236 in)
Operating temperature range:	-40 °C ÷ +105 °C (-40 °F ÷ +221 °F)
Contact resistance:	<15 mΩ
Insulating material group:	I (CTI ≥ 600V)
Self-extinguishing class UL94:	V0
Insulation resistance:	>10 ⁹ Ω (500V DC)

Certifications

UL (n. E167473)
300 V - 10 A - 30÷16 AWG

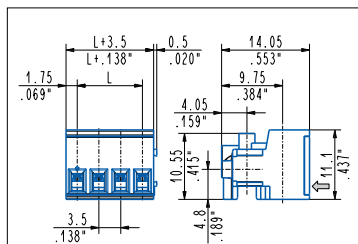
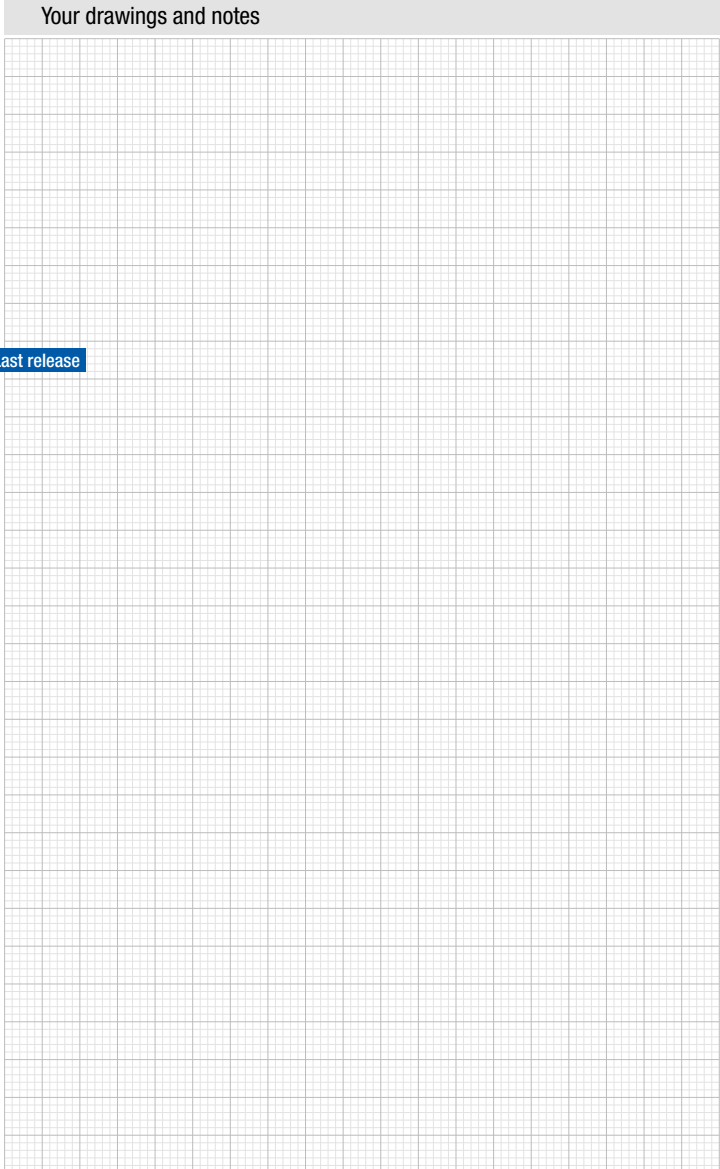
Data according to

IEC EN 61984
150 V - 10 A - 1.5 mm² for 3.5 mm pitch
300 V - 10 A - 1.5 mm² for 7 mm pitch

Application values for end-use equipment have to be in accordance with norms and applicable to it. The certifications of some product's versions could be pending, for more detailed and updated data please refer to our web site www.sauro.net or your representative Sales Manager.

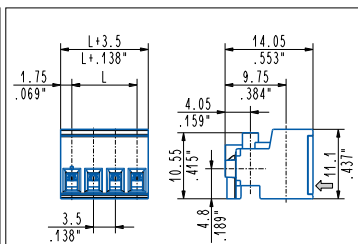
A higher number of poles is obtained by combining together **modular** parts.

Please see "CONNECTORS COMBINATIONS"



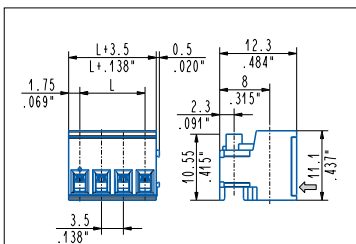
Flexible use, modular

CLF_008 - 2 ÷ 22 poles, 3.5 mm / .138" pitch
CLF_009 - 1 ÷ 11 poles, 7 mm / .276" pitch



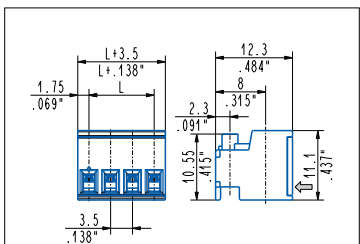
Flexible use, side stackable

CLF_008 - 2 ÷ 22 poles, 3.5 mm / .138" pitch
CLF_009 - 2 ÷ 11 poles, 7 mm / .276" pitch



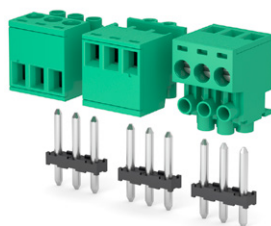
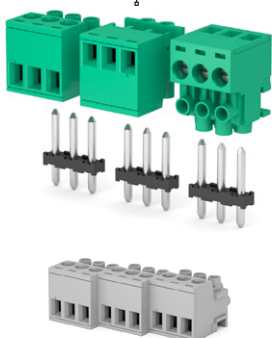
90° and 270°, modular

CLF_008 - 2 ÷ 22 poles, 3.5 mm / .138" pitch
CLF_009 - 1 ÷ 11 poles, 7 mm / .276" pitch



90° and 270°, side stackable

CLF_008 - 2 ÷ 22 poles, 3.5 mm / .138" pitch
CLF_009 - 2 ÷ 11 poles, 7 mm / .276" pitch



Usable with:

CLMH_S

Page 57