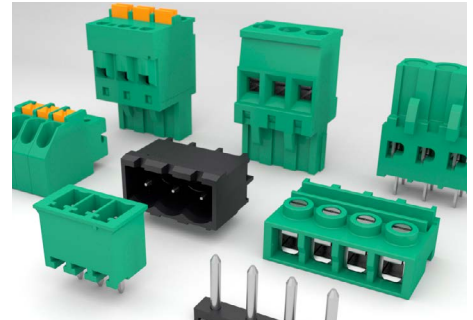


**Terminal  
blocks &  
Plurima®**



**Connectors**



**Accessories**



Product Overview



**Sauro®**  
ELECTRONIC CONNECTORS  
by the law

# Fields of application

-  **Charging station**
-  **Green Energy**
-  **Safety and Security**
-  **Industry**
-  **HVACR**
-  **Factory Test and Measurement**
-  **Process Automation and Utility Management**
-  **Building Technology**
-  **Control Devices**
-  **Lighting**
-  **Oil and Gas**
-  **Medical**
-  **Power Electronics**
-  **Home Automation & Domotics compliant to EN 60335-1**
-  **Wireless Connection Devices**



SAURO was founded in Padua, Italy in 1984. We design and manufacture both our high quality PCB **terminal blocks and connectors** and the machines and automated systems which manufacture them.

**100% engineered and manufactured in ITALY**

# Connect with confidence, we take care of the rest



## By the law

SAURO has always demonstrated the highest respect for human health and safety and for the environment by obtaining ISO 9001, 14001 and 45001 certification and with compliance to the REACH regulation and RoHS directive. Sauro embraces the fight against violence, human rights violations and environmental degradation, which is why we only source from suppliers who can guarantee that they are Conflict Mineral Free. Moreover, having obtained the most prestigious international agency approvals (UL, CSA, VDE, IMQ) confirms compliance with high quality standards.

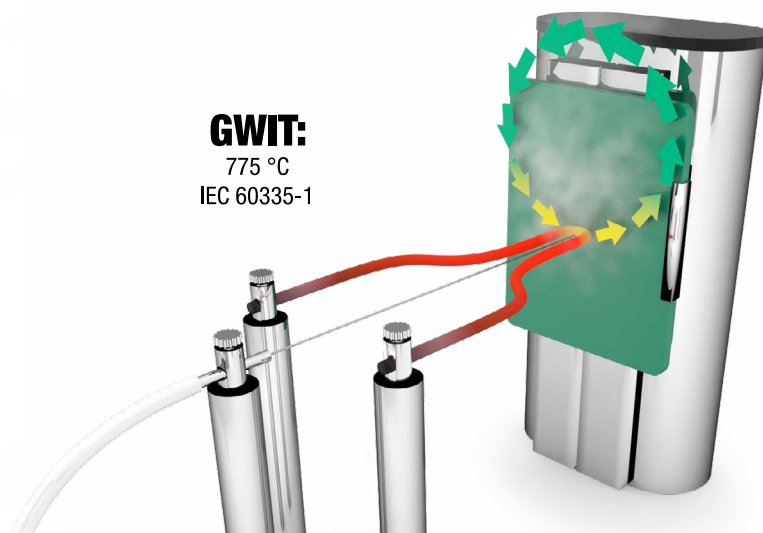
## Strategy



All production, from individual components to finished products is done at the headquarters in Padua, Italy. Machines, assembly lines and molds are all designed and built in-house. SAURO has always provided products that are fully tested on the production line allowing the customer a guarantee of zero functional defects.



**NO Tin Whiskers Phenomenon**

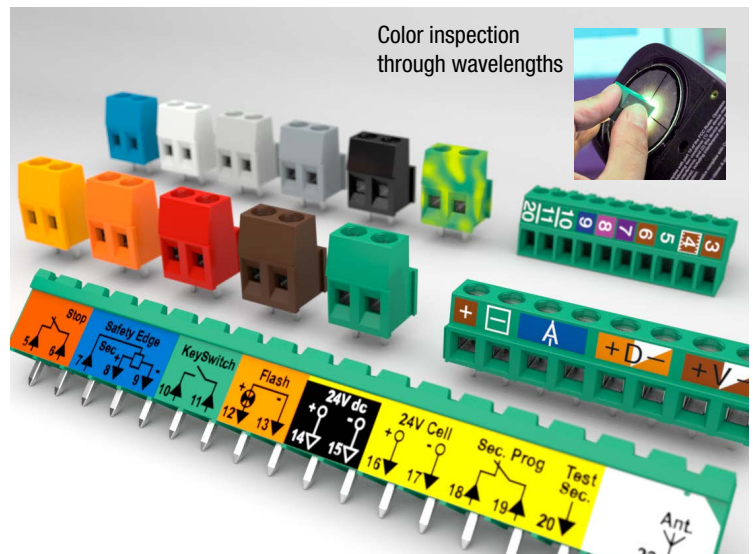
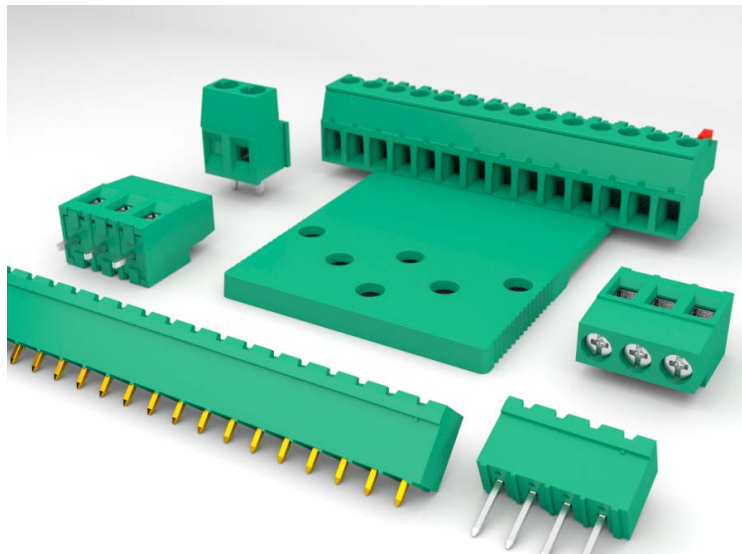


## Choice of materials

The high quality of SAURO products is guaranteed by the attentive choice of materials and the continuous research and development with raw material suppliers of innovative and better performing materials. The Insulating material is phosphorus, dioxins, halogen and antimony trioxide free and it is V0 class self-extinguishing according to UL94 certification. It is also GWIT (Glow Wire Ignition Temperature) classified at 775°C and therefore suitable for use in domestic appliances subject to European Standard EN 60335-1. All products are suitable for use in harsh environments and operating conditions since metallic components are made exclusively in special copper alloys. In addition, products with spring clamping technology can be used in environments where ammonia is present (NH<sub>3</sub>) thanks to the use of stainless steel. Characteristically the properties of SAURO products remain unchanged in time maintaining the maximum safety and reliability.



# Smart and customer-specific solutions



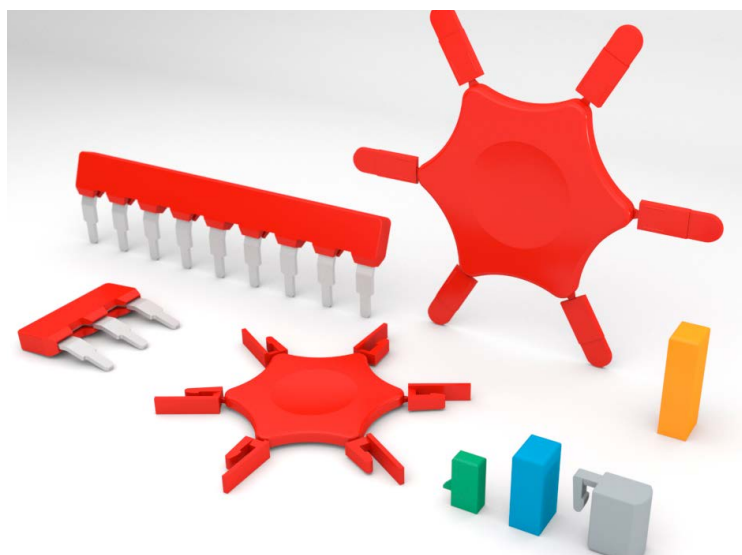
## Design-in

Due to the flexibility of our molding tools and SAURO's philosophy of being oriented towards customer needs, the insulating housings and metallic components can be designed and manufactured according to the customer required specification.

Examples include: non-fundamental geometric changes, closed product base, closed wire entry, addition of cable clip, customized pin length, special plating, various screw head types and more.

## Colors & Marking

The standard color of traditional products (manual or wave soldering) is green, and for STH products (for high temperature reflow soldering) is black. Different colors are available upon request. SAURO offers pad printing using a bi-component ink, obtaining characters with the highest possible readability that are also indelible and scratch resistant.



## Accessories

Various accessories are offered separately or already mounted to the SAURO product. Examples include coding clips and splines, bridges for short circuits and occluders. Thanks to modular molds of the insulating housing, the coding clips and splines can be replaced by integrated coding of the insulating body, and pole closures can be done by molding instead of loosely inserted occluders.

## Packaging solutions

All products can be supplied according to customer requirements or to the assembly process on the PCB. Packaging in kits, for example, allows for simplified product handling, shipping, storage and assembly, as well as reduced risk of error. Moreover, depending on the PCB assembly requirement, products can be supplied in aligned tray and tube packaging (ideal for semi-automated assembly) or in tape on reel and cell tray (ideal for automated assembly).

# From standard product to STH: our evolution and its

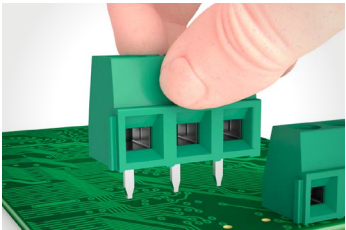
## STANDARD

Materials



Traditional polyamide PA6.6

PCB assembly



Manual assembly process

Soldering process



Wave and manual soldering

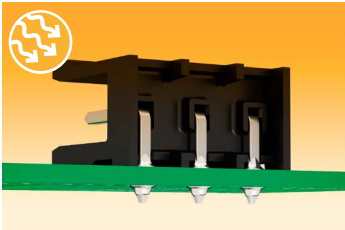
## STH



30% glass fibre reinforced and MSL1 (Moisture Sensitivity Level 1) rated polyamide: no moisture absorption



Automated assembly process using gripper or vacuum system





Reflow soldering


**Benefits**

Products withstand the high temperatures of reflow ovens and do not require any moisture barrier bag or drying process before going in to the oven.

**Benefits**

For high volume usage the automated assembly process is the most reliable, convenient and efficient choice.


**Benefits**

**STH** products can be soldered in the reflow oven together with all other **SMD** products eliminating the additional wave soldering process and all the intermediate storages.



Packaging

Furthermore

Future



Bulk

What we need?

- Intermediate storage
- Manual assembly
- Wave or manual soldering process



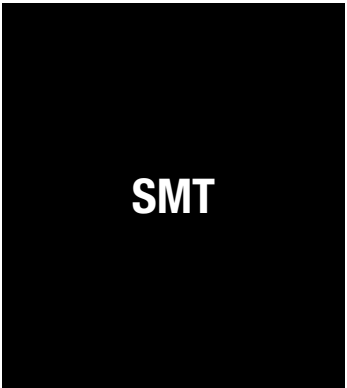
Through hole reflow technology




Tape on reel

We do not need!

- PAD
- Intermediate storage
- Manual assembly
- Moisture barrier bag or drying process
- Wave soldering process



Surface Mount Technology



**Benefits**

Tape on reel packaging is the best method of product placement for automated assembly on the PCB.



**Factory's work space and time reduced by**

**70%**

**Respect to STANDARD**



**Benefits**

SAURO **SMD** products have been designed to offer small and smart solutions when the dominant requirement is compactness and miniaturization.



**Factory's work space and time reduced by**

**75%**

**Respect to STANDARD**

# Terminal blocks

## TRADITIONAL for wave soldering

### Clamp technology

Series			MSD	MTB	MTS	MSB	MSG	MSM	MSS	MSQ
Height			10 mm .394 in	8.5 mm .335 in	12.6 mm .496 in	10 mm .394 in	13.5 mm .531 in	15.2 mm .598 in	15.2 mm .598 in	19 mm .748 in
Mounting type & Version	Side stackable		0°	0°, 55°		55°, 90°, 180°, 360°	0°	0°	90°	0°
	Modular			0°, 55°	0°, 90°	0°, 55°, 90°, 180°, 360°	0°, 90°, 270°	0°, 35°, 90°, 225°, 270°	0°, 90°, 270°	0°, 90°
	Polarized									
	Flanges									
Pitch mm/in.	2.54	.100	2.54 (x)		3.5 (x)					
	3.5	.138		3.5 (x)	3.5 (x)					
	3.81	.150		3.81 (x)	3.81 (x)					
	5	.197				5 (x)	5 (x)	5 (x)	5 (x)	5 (x)
	5.08	.200	5.08 (•)			5.08 (x)	5.08 (x)	5.08 (x)	5.08 (x)	5.08 (x)
	6.35	.250								
	7	.276		7 (•)	7 (•)					
	7.5	.295					7.5 (•)	7.5 (•)	7.5 (•)	7.5 (•)
	7.62	.300		7.62 (•)	7.62 (•)		7.62 (•)	7.62 (•)	7.62 (•)	7.62 (•)
	9.52	.375								
	10	.394				10 (•)	10 (•)	10 (•)	10 (•)	10 (•)
	10.16	.400				10.16 (•)	10.16 (•)	10.16 (•)	10.16 (•)	10.16 (•)
	12.7	.500								
	15	.591								15 (•)
Rated voltage			150 V (x) 300 V (•)	300 V (x) 750 V (•)	300 V (x) 750 V (•)	300 V (x) 750 V (•)	300 V (x) 750 V (•)	300 V (x) 750 V (•)	300 V (x) 750 V (•)	300 V (x) 750 V (•)
Wire section mm²			0.05÷1	0.05÷1.5	0.05÷1.5	0.05÷1.5	0.05÷2.5	0.05÷2.5	0.05÷2.5	0.05÷4
Wire section AWG			30÷16	28÷16	30÷14	30÷16	30÷14	30÷12	30÷12	30÷12
Rated current			12 A	17.5 A	17.5 A	17.5 A	24 A	24 A	24 A	32 A

## STH & SMD for reflow soldering



### Clamp technology

Series			MBBH	MBBD SMD	MTBH	MTBD SMD	MSBH	MSBD SMD	MSGH	MSMH	MSMH N.	MSFH
Height			7.3 mm .287 in	7.5 mm .295 in	8.5 mm .335 in	8.5 mm .335 in	10 mm .394 in	10.15 mm .400 in	13.5 mm .531 in	15.2 mm .598 in	17.05 mm .671 in	15.5 mm .610 in
Mounting type & Version	Side stackable		90°	0°	0°, 55°	0°	0°, 55°, 90°	0°	0°, 90°	0°	0°	0°
	Modular				0°, 55°		0°, 55°, 90°		0°, 90°	0°, 35°		
	Polarized											
	Flanges											
Pitch mm/in.	2.54	.100										
	3.5	.138			3.5 (x)	3.5 (x)						
	3.81	.150	3.81 (x)	3.81 (x)	3.81 (x)	3.81 (x)						
	5	.197					5 (x)	5 (x)	5 (x)	5 (x)	5 (x)	
	5.08	.200					5.08 (x)		5.08 (x)			
	6.35	.250										
	7	.276			7 (•)	7 (•)						
	7.5	.295							7.5 (•)	7.5 (•)		
	7.62	.300	7.62 (•)	7.62 (•)	7.62 (•)	7.62 (•)			7.62 (•)			7.62 (•)
	9.52	.375										
	10	.394					10 (•)	10 (•)	10 (•)	10 (•)		
	10.16	.400					10.16 (•)		10.16 (•)			
	12.7	.500										
	15	.591										
Rated voltage			300 V (x) 600 V (•)	300 V (x) 600 V (•)	300 V (x) 750 V (•)	300 V (x) 750 V (•)	300 V (x) 750 V (•)	300 V (x) 750 V (•)	300 V (x) 750 V (•)	300 V (x) 750 V (•)	300 V (x)	750 V (•)
Wire section mm²			0.05÷0.75	0.05÷0.75	0.05÷1.5	0.05÷1.5	0.05÷1.5	0.05÷1.5	0.05÷2.5	0.05÷2.5	0.05÷2.5	0.05÷2.5
Wire section AWG			28÷18	28÷18	28÷16	28÷16	30÷16	30÷16	30÷14	30÷12	30÷12	30÷12
Rated current			9 A	9 A	12 A	12 A	17.5 A	17.5 A	24 A	24 A	24 A	24 A



MSL1 Not moisture sensitive



Traditional for wave soldering



STH for reflow soldering



Solderable up to 275 °C



Pick and place system



For resined PCBs



## Spring technology



MSP	MPS	MPP	MMT	MCM	MCQ	MCQ D.
21.5 mm .846 in	29.3 mm 1.154 in	39 mm 1.535 in	14.85 mm .585 in	14.45 mm .569 in	17.9 mm .705 in	17.3 mm .681 in
0°, 35°, 90°	0°	0°	90°	0°	0°, 90°	90°
	0°	0°		0°		
			3.5 (x) 3.81 (x)			
				5 (x) 5.08 (x)	5 (x) 5.08 (x)	5 (x)
6.35 (x)						
			7 (•)			
7.62 (x) 9.52 (•)			7.62 (•)	7.5 (•) 7.62 (•)		
				10 (•) 10.16 (•)	10 (•) 10.16 (•)	10 (•)
12.7 (□)	10.16 (•)					
		15 (•)				
450 V (x) 750 V (•) 600 V (□)	1000 V (•)	1000 V (•)	300 V (x) 750 V (•)	300 V (x) 750 V (•)	300 V (x) 750 V (•)	300 V (x) 750 V (•)
0.05÷6 30÷10 41 A	0.5÷16 20÷6 76 A	0.5÷35 20÷1 135 A	0.2÷1.5 30÷16 10 A	0.2÷2.5 30÷12 16 A	0.2÷2.5 30÷12 16 A	0.2÷2.5 30÷12 16 A

## Spring technology



MSSH	MSQH	MSPH	MMTH	MCBH	MCB D SMD	MCC	MCMH	MCQH	MCQH D.
15.2 mm .598 in	19 mm .748 in	21.5 mm .846 in	15 mm .590 in	8 mm .315 in	8 mm .315 in	12 mm .472 in	14.45 mm .569 in	17.9 mm .705 in	17.3 mm .681 in
0°	0°		90°	45°	45°	45°	0°	0°, 90°	90°
0°	0°	0°, 35°, 90°					0°		
			3.5 (x) 3.81 (x)	3.5 (x)	3.5 (x)				
5 (x)	5 (x) 5.08 (x)			5 (x)	5 (x)	3.81 (x) 5.08 (x)	5.08 (x)	5 (x)	5 (x)
		6.35 (x)							
			7 (•)	7 (•)	7 (•)				
7.5 (•) 7.62 (•)	7.5 (•) 7.62 (•)	7.62 (x) 9.52 (•)	7.62 (•)			7.62 (•)			
10 (•)				10 (□)	10 (□)	10.16 (•)		10 (•)	10 (•)
300 V (x) 750 V (•)	300 V (x) 750 V (•)	450 V (x) 750 V (•)	300 V (x) 750 V (•)	300 V (x) 630 V (•) 1000 V (□)	300 V (x) 630 V (•) 1000 V (□)	300 V (x) 630 V (•) 1000 V (□)	300 V (x)	300 V (x) 750 V (•)	300 V (x) 750 V (•)
0.05÷2.5 30÷12 24 A	0.05÷4 30÷12 32 A	0.05÷6 30÷10 41 A	0.2÷1.5 30÷16 10 A	0.2÷1.5 24÷16 17.5 A	0.2÷1.5 24÷16 17.5 A	0.2÷1.5 30÷16 13.5 A	0.2÷2.5 30÷12 16 A	0.2÷2.5 30÷12 16 A	0.2÷2.5 30÷12 16 A



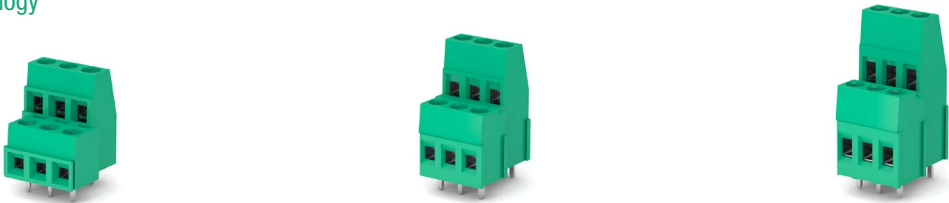
Board to board connection



Wire to wire connection

TRADITIONAL  
for wave soldering

Clamp technology



Series		PSB	PSM	PSQ
Height		19 mm (C) .748 in	25.2 mm (C) .992 in	31.5 mm (C) 1.240 in
Mounting type & Version	Side stackable	A,B,C,D,E	A,B,C,D,E	A,B,C,D,E,F
	Modular			
	Polarized			
	Flanges			
Pitch mm/in.	2.54	5 (x) 5.08 (x)	5 (x) 5.08 (x)	5 (x) 5.08 (x)
	.100			
	3.5			
	.138	10 (•) 10.16 (•)	10 (•) 10.16 (•)	10 (•) 10.16 (•)
	3.81			
	.150			
	5	10 (•) 10.16 (•)	10 (•) 10.16 (•)	10 (•) 10.16 (•)
	.197			
	5.08			
	.200	10 (•) 10.16 (•)	10 (•) 10.16 (•)	10 (•) 10.16 (•)
	6.35			
	.250			
Pitch mm/in.	7	10 (•) 10.16 (•)	10 (•) 10.16 (•)	10 (•) 10.16 (•)
	.276			
	7.5			
	.295	10 (•) 10.16 (•)	10 (•) 10.16 (•)	10 (•) 10.16 (•)
	7.62			
	.300			
	9.52	10 (•) 10.16 (•)	10 (•) 10.16 (•)	10 (•) 10.16 (•)
	.375			
Pitch mm/in.	10			
	.394	10 (•) 10.16 (•)	10 (•) 10.16 (•)	10 (•) 10.16 (•)
	10.16			
	.400			
Pitch mm/in.	12.7	10 (•) 10.16 (•)	10 (•) 10.16 (•)	10 (•) 10.16 (•)
	.500			
	15			
	.591	10 (•) 10.16 (•)	10 (•) 10.16 (•)	10 (•) 10.16 (•)
Pitch mm/in.	Rated voltage			
	300 V (x) 750 V (•)			
	Wire section mm <sup>2</sup>			
	0.05÷1.5			
Pitch mm/in.	Wire section AWG			
	30÷16			
	Rated current			
	17.5 A			



Pulirma  
available versions



**PSB (A)** - Medium tower  
Height 19 mm/.748 in



**PSB (B)** - High tower  
Height 28 mm/1.102 in



**PSB (C)** - 1st & 2nd levels  
Height 19 mm/.748 in



**PSB (D)** - 2nd & 3rd levels  
Height 28 mm/1.102 in



**PSB (E)** - 3 levels  
Height 28 mm/1.102 in



**PSM (A)** - Medium tower  
Height 25.2 mm/992 in



**PSM (B)** - High tower  
Height 35.6 mm/1.402 in



**PSM (C)** - 1st & 2nd levels  
Height 25.2 mm/992 in



**PSM (D)** - 2nd & 3rd levels  
Height 35.6 mm/1.402 in



**PSM (E)** - 3 levels  
Height 35.6 mm/1.402 in



**PSQ (A)** - Medium tower  
Height 31.5 mm/1.240 in



**PSQ (B)** - High tower  
Height 45 mm/1.772 in



**PSQ (C)** - 1st & 2nd levels  
Height 31.5 mm/1.240 in



**PSQ (D)** - 2nd & 3rd levels  
Height 45 mm/1.772 in



**PSQ (E)** - 3 levels  
Height 45 mm/1.772 in



**PSQ (F)** - 4 levels  
Height 58.8 mm/2.315 in

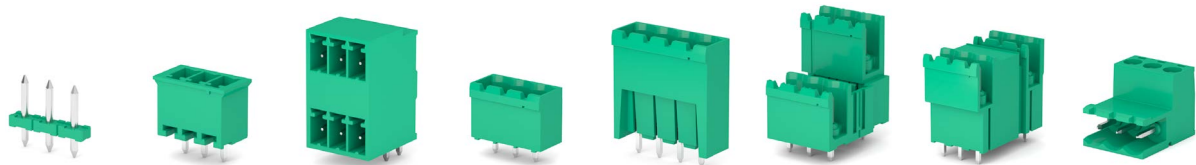




Connectors

TRADITIONAL  
for wave soldering

Male connectors



Series			CSM	CTM	CTM DOUBLE	CIM	CPM HIGH	CPM	CRM	CGM
Height			9 mm .355 in 0°,90°	9.2 mm .362 in 0°,90°	18.6 mm .732 in	12 mm .472 in 0°,45°,90°,270°	22.08 mm .869 in	22.08 mm .869 in 0°,90°	22 mm .866 in 0°,90°	15 mm .591 in 0°
Mounting type & Version	Side stackable			0°,45°,90°,270°		0°,45°,90°,270°		0°,90°	0°,90°	0°
	Modular			0°,45°,90°,270°	90°	0°,45°,90°,270°		0°,90°	0°,90°	0°
	Polarized			0°,45°,90°,270°		0°,45°,90°,270°	0°	0°,90°	0°,90°	0°
	Flanges			0°,45°,90°,270°		0°,45°,90°,270°				
Pitch mm/in.	2.54	.100								
	3.5	.138		3.5 (x)	3.5 (x)					
	3.81	.150		3.81 (x)						
	5	.197	5 (x)	5 (x)		5 (x)	5 (x)	5 (x)	5 (x)	5 (x)
	5.08	.200		5.08 (x)		5.08 (x)		5.08 (x)	5.08 (x)	5.08 (x)
	6.35	.250								
	7	.276		7 (●)	7 (●)					
	7.5	.295				7.5 (●)				7.5 (●)
	7.62	.300		7.62 (●)		7.62 (●)				7.62 (●)
	9.52	.375								
	10	.394	10 (●)	10 (□)		10 (□)	10 (□)	10 (●)	10 (●)	10 (□)
	10.16	.400		10.16 (□)		10.16 (□)		10.16 (●)	10.16 (●)	10.16 (□)
	12.7	.500								
	15	.591								
Rated voltage			300 V (x) 1000 V (●)	300 V (x) 600 V (●) 1000 V (□)	300 V (x) 600 V (●)	300 V (x) 600 V (●) 1000 V (□)	300 V (x) 1000 V (□)	300 V (x) 1000 V (●)	300 V (x) 1000 V (●)	300 V (x) 600 V (●) 1000 V (□)
Wire section mm²										0.05÷2.5
Wire section AWG										30÷12
Rated current			12 A	11 A	11 A	16 A	12 A	16 A	16 A	16 A

STH & SMD  
for reflow soldering



Male connectors



Series			CSMH	CSMD SMD	CLMH	CTMH	CTMH DOUBLE	CIMH	CIMH N.	CPMH
Height			9 mm .355 in 0°,90°	9.5 mm .374 in 0°	9 mm .355 in 0°	9.2 mm .362 in 0°,45°,90°,270°	18.6 mm .732 in	12 mm .472 in 0°,45°,90°,270°	16.49 mm .649 in 0°	22.08 mm .869 in 0°,90°
Mounting type & Version	Side stackable					0°,45°,90°,270°		0°,45°,90°,270°		0°,90°
	Modular					0°,45°,90°,270°	90°	0°,45°,90°,270°		0°,90°
	Polarized					0°,45°,90°,270°		0°,45°,90°,270°		
	Flanges					0°,45°,90°,270°		0°,45°,90°,270°		
Pitch mm/in.	2.54	.100								
	3.5	.138			3.5 (x)	3.5 (x)	3.5 (x)			
	3.81	.150				3.81 (x)				
	5	.197	5 (x)	5 (x)		5 (x)		5 (x)	5 (●)	5 (x)
	5.08	.200				5.08 (x)		5.08 (x)		5.08 (x)
	6.35	.250								
	7	.276			7 (●)	7 (●)	7 (●)			
	7.5	.295				7.62 (●)		7.5 (●)		
	7.62	.300						7.62 (●)		
	9.52	.375								
	10	.394	10 (●)	10 (●)		10 (□)		10 (□)		10 (●)
	10.16	.400				10.16 (□)		10.16 (□)		10.16 (●)
	12.7	.500								
	15	.591								
Rated voltage			300 V (x) 1000 V (●)	300 V (x) 1000 V (●)	150 V (x) 300 V (●)	300 V (x) 600 V (●) 1000 V (□)	300 V (x) 600 V (●)	300 V (x) 600 V (●) 1000 V (□)	300 V (●)	300 V (x) 1000 V (●)
Wire section mm²										
Wire section AWG										
Rated current			12 A	12 A	10 A	11 A	11 A	16 A	15 A	16 A

# Connectors

## TRADITIONAL for wave soldering

### Female connectors



Series			CGF	CXF	CSF	CLF	CHF	CHF D.
Height			18.9 mm .744 in	7.95 mm .313 in	11.5 mm .453 in	11.1 mm .437 in	12.5 mm .492 in	16 mm .630 in
Mounting type & Version	Side stackable			90°, 270°	0°, 90°, 270°	0°, 90°, 270°	45°	45°
	Modular		0°, 90°		0°, 90°, 270°	0°, 90°, 270°		
	Polarized							
	Flanges				90°, 270°			
Pitch mm/in.	2.54	.100						
	3.5	.138				3.5 (●)	3.5 (x)	3.5 (x)
	3.81	.150						
	5	.197	5 (x)	5 (●)	5 (x)			
	5.08	.200	5.08 (x)					
	6.35	.250						
	7	.276				7 (●)	7 (●)	7 (●)
	7.5	.295	7.5 (●)					
	7.62	.300	7.62 (●)					
	9.52	.375						
	10	.394	10 (□)		10 (●)			
	10.16	.400	10.16 (□)					
Rated voltage			300 V (x) 600 V (●) 1000 V (□)	300 V (●)	300 V (x) 1000 V (●)	300 V (●)	150 V (x) 300 V (●)	150 V (x) 300 V (●)
Wire section mm²				0.2 ÷ 1.5	0.05 ÷ 2.5	0.5 ÷ 1.5	0.5 ÷ 1.5	0.5 ÷ 1.5
Wire section AWG				28 ÷ 16	30 ÷ 14	30 ÷ 16	24 ÷ 16	24 ÷ 16
Rated current			16 A	10 A	12 A	10 A	4 A	8 A



## STH & SMD for reflow soldering



### Female connectors



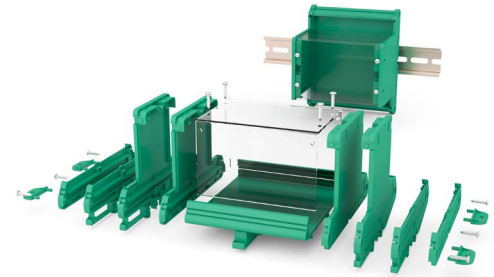
Series			CGFH
Height			18.9 mm .744 in
Mounting type & Version	Side stackable		
	Modular		0°, 90°
	Polarized		
	Flanges		
Pitch mm/in.	2.54	.100	
	3.5	.138	
	3.81	.150	
	5	.197	5 (x)
	5.08	.200	5.08 (x)
	6.35	.250	
	7	.276	
	7.5	.295	7.5 (●)
	7.62	.300	7.62 (●)
	9.52	.375	
	10	.394	10 (□)
	10.16	.400	10.16 (□)
Rated voltage			300 V (x) 600 V (●) 1000 V (□)
Wire section mm²			
Wire section AWG			
Rated current			16 A



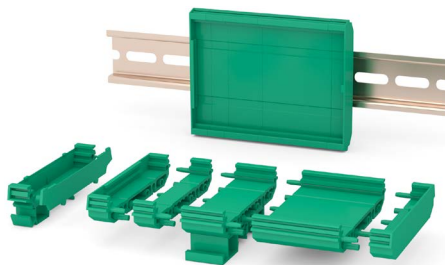
## PCB Supports



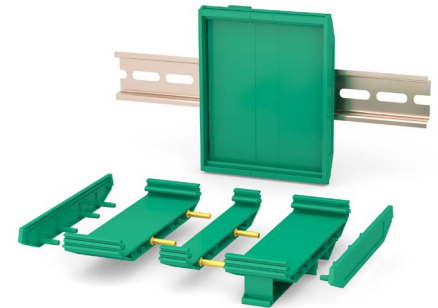
STC 072 Extruded supports



STC 107 Extruded supports



SMC 072 Modular supports



SMC 107 Modular supports



SRC 175 DIN Rail Boxes



SRC 225 DIN Rail Boxes



SRC 350 DIN Rail Boxes



SRC 450 DIN Rail Boxes



MSL1 Not moisture sensitive



Traditional for wave soldering



STH for reflow soldering



Solderable up to 275 °C

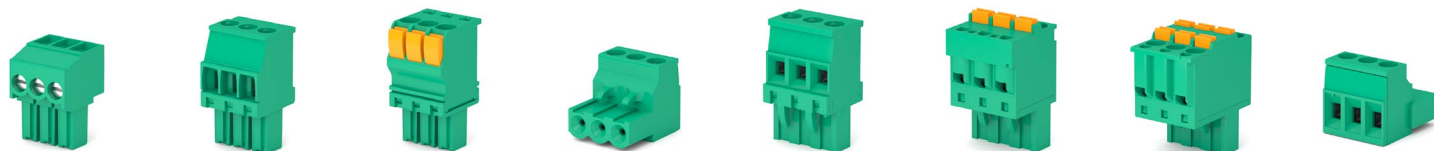


Pick and place system



For resined PCBs





CTF	CKF	CBF	CIF	CVF	CCF	CCF D.	CUF
11.1 mm .437 in	19.2 mm .756 in	20.85 mm .821 in	15.5 mm .610 in	25 mm .984 in	25.4 mm 1 in	25.2 mm .992 in	15.5 mm .610 in
0°	90°	0°	0°	90°	0°	0°	0°
	90°		0°	90°			0°
0°	90°	0°	0°	90°	0°	0°	
3.5 (x)	3.5 (•)	3.5 (x)					
3.81 (x)	3.81 (•)	3.81 (x)					
5 (•)			5 (x)	5 (x)	5 (x)	5 (x)	5 (x)
5.08 (•)			5.08 (x)	5.08 (x)	5.08 (x)		
7 (□)	7 (□)	7 (•)					
7.62 (□)	7.62 (□)	7.62 (•)	7.5 (•)	7.5 (•)			
			7.62 (•)	7.62 (•)			
10 (□)			10 (□)	10 (□)	10 (•)	10 (•)	10 (•)
10.16 (□)			10.16 (□)	10.16 (□)	10.16 (•)		
300 V (x) 600 V (•)	300 V (•)	150 V (x)	300 V (x) 600 V (•)	300 V (x) 600 V (•)	300 V (x)	300 V (x)	300 V (x)
1000 V (□)	1000 V (□)	300 V (•)	1000 V (□)	1000 V (□)	1000 V (•)	1000 V (•)	750 V (•)
0.05÷1.5	0.05÷1.5	0.14÷1.5	0.05÷2.5	0.05÷2.5	0.2÷2.5	0.2÷2.5	0.05÷1.5
30÷14	30÷14	30÷14	30÷12	30÷12	30÷12	30÷12	30÷12
11 A	11 A	11 A	16 A	16 A	12 A	12 A	10 A

## Angle definition

Clamp terminal blocks



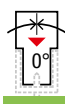
Angle between the PCB and the wiring direction

Spring terminal blocks



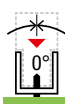
Angle between the PCB and the wiring direction

Female connectors



Angle between the plugging direction and the wiring direction

Male connectors



Angle between the normal to the PCB and the plugging direction

## Compatibility of connectors

	CXF	CSF	CLF	CHF	CHF D.	CTF	CKF	CBF	CIF	CVF	CCF	CCF D.	CGF
<b>CSM</b>	✓	✓											
<b>CSMH</b>	✓	✓											
<b>CSMD</b>	✓	✓											
<b>CLMH_S</b>			✓		✓								
<b>CLMH_0</b>				✓									
<b>CTM</b>						✓	✓	✓					
<b>CTMH</b>						✓	✓	✓					
<b>CTM D.</b>						✓	✓	✓					
<b>CTMH D.</b>						✓	✓	✓					
<b>CIM</b>									✓		✓	✓	
<b>CIMH</b>									✓	✓	✓	✓	
<b>CPM H.</b>									✓	✓	✓	✓	
<b>CPM</b>									✓	✓	✓		
<b>CPMH</b>									✓	✓	✓		
<b>CRM</b>									✓	✓	✓		
<b>CIMH N.</b>									✓	✓	✓	✓	
<b>CGM</b>													✓

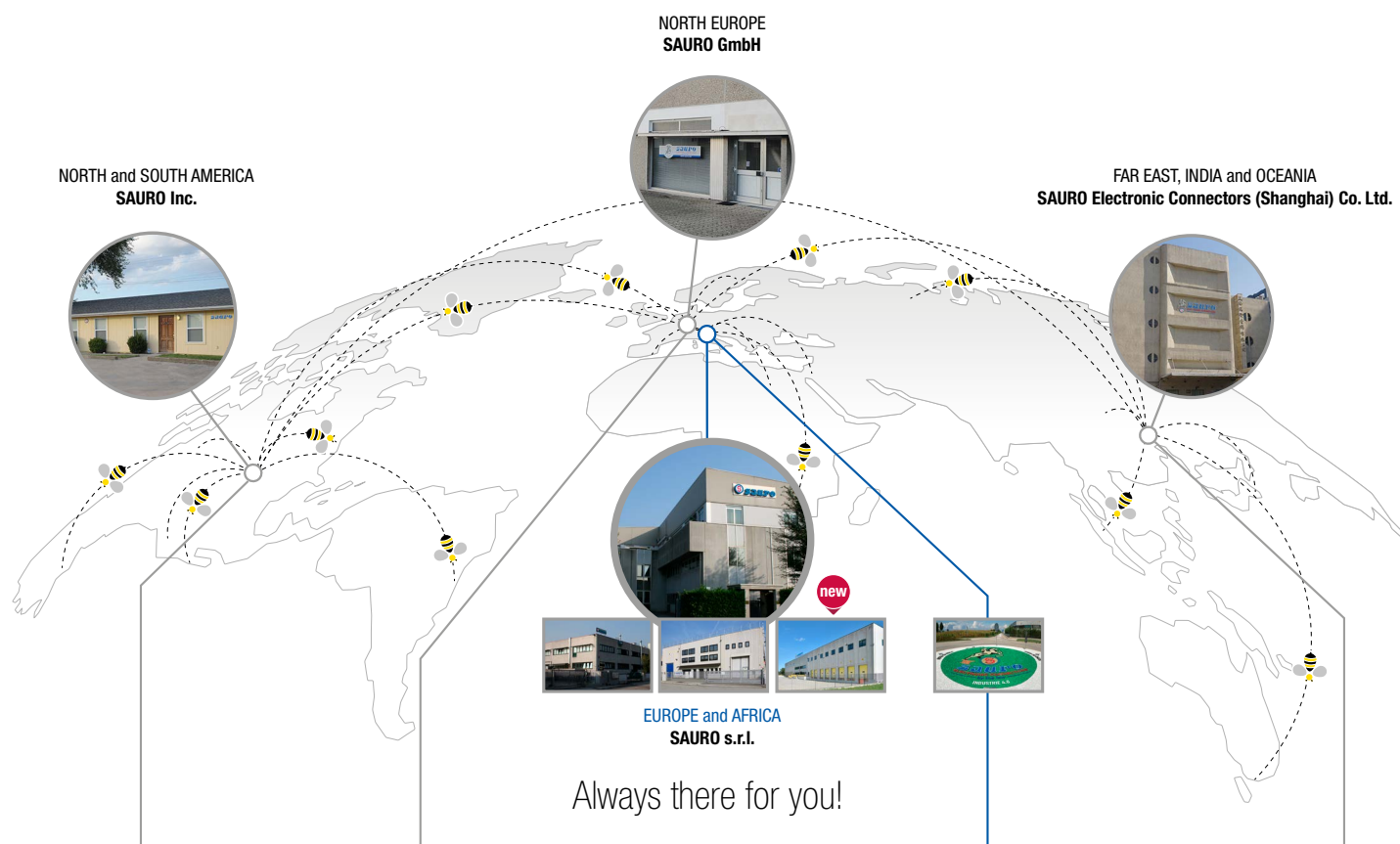


Board to board connection



Wire to wire connection

Connect with confidence, we take care of the rest



**NORTH and SOUTH AMERICA**

**SAURO Inc.**

1604 - A Bench Mark Dr.  
AUSTIN, TX 78728  
Tel.: (+1) 512 2558420  
Fax: (+1) 512 2558430  
E-mail: sauroinc@sauro.net



**NORTH EUROPE**

**SAURO GmbH**

Kurfürstenstrasse, 40C  
D-47829 Krefeld  
Tel.: (+49) 2151 7896043  
Fax: (+49) 2151 7899694  
E-mail: saurogmbh@sauro.net



**EUROPE and AFRICA**

**SAURO s.r.l.**

Viale delle Industrie, 17  
35010 Villafranca Padovana - Padova - Italy  
Tel.: (+39) 049 9070440  
Fax: (+39) 049 9070430  
E-mail: info@sauro.net



**FAR EAST, INDIA and OCEANIA**

赛络电子元件（上海）有限公司  
中国上海外高桥保税区富特北路133号三层  
邮编: 200131  
Tel.: (+86) 021 58682734  
Fax: (+86) 021 58682766  
E-mail: saurocn@sauro.net



Each one of your enquiries will be shared among all our Divisions.  
Every single request will always be answered.